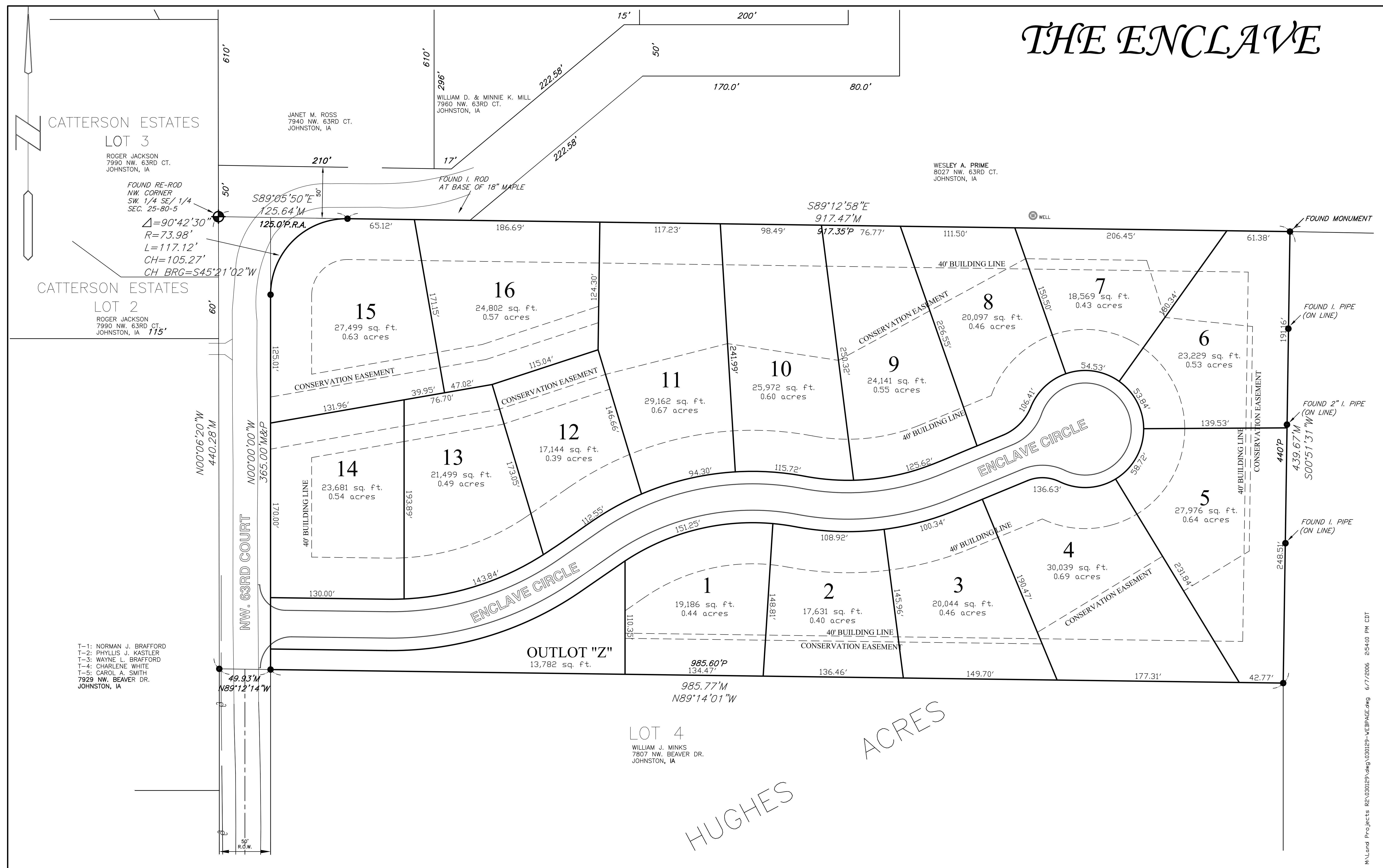


THE ENCLAVE



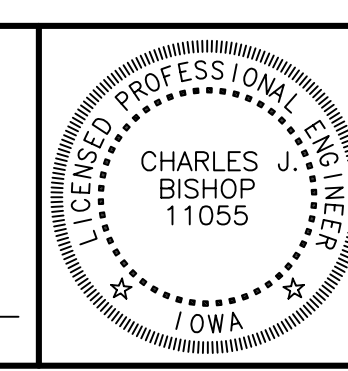
HUGHES ACRES

- T-1: NORMAN J. BRAFFORD
- T-2: PHYLLIS J. KASTLER
- T-3: WAYNE L. BRAFFORD
- T-4: CHARLENE WHITE
- T-5: CAROL A. SMITH

Bishop Engineering
 "Planning Your Successful Development"
 3501 104th Street
 Des Moines, Iowa 50322-3825
 Phone: (515)276-0467 Fax: (515)276-0217
 Civil Engineering & Land Surveying Established 1959

NUMBER	REVISIONS	DATE	BY
10			
9			
8			
7			
6			
5			
4			
3			
2			
1			

I HEREBY CERTIFY THAT THIS ENGINEERING DOCUMENT WAS PREPARED BY ME OR UNDER MY DIRECT PERSONAL SUPERVISION AND THAT I AM A DULY LICENSED PROFESSIONAL ENGINEER UNDER THE LAWS OF THE STATE OF IOWA.
 LICENSE RENEWAL DATE: DECEMBER 31, 2004
 BY: CHARLES J. BISHOP
 SCALE: 1" = 40.0'
 FOR: THE ENCLAVE OF JOHNSTON SIGNED: DATE:



PROJECT NAME	PRELIMINARY PLAT	CLIENT NUMBER	198	PROJECT NUMBER	
	THE ENCLAVE JOHNSTON, IOWA	REFERENCE NUMBER	010323		03 0129
		DRAWN BY	JEJ		SHEET 1 OF 1